

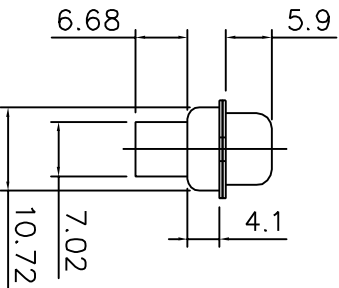
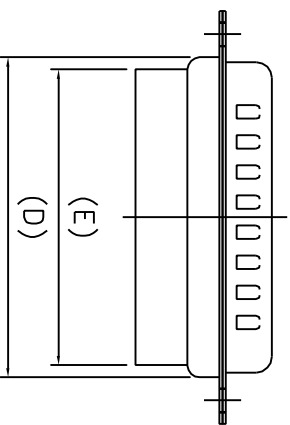
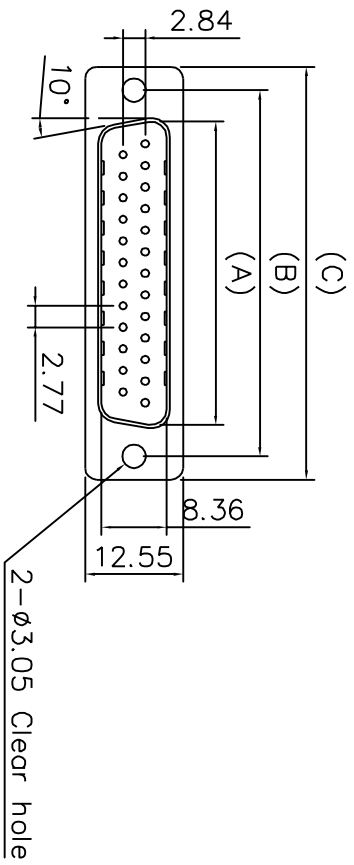
MALE

D-SUB CRIMP TYPE

Specifications

- Contact Resistance: $\leq 30m$ max. at DC
- 100mA
- Insulator Resistance: 1000M min. at DC
- 500V
- Current Rating: 5 AMP
- Dielectric Withstanding
- Voltage: AC 1000V For 1 minute
- Operating Temperature: $-55^{\circ}C \sim +105^{\circ}C$
- Contact: Brass
- Housing: PBT & 30% Glass Fiber (UL 94V-0)

ROHS compliant
MSL components : level 3



L777RR -- P

Shell size

Nber of cts

09-15-25-37

- E = 09 ways
- A = 15 ways
- B = 25 ways
- C = 37 ways

Dimension

Position	A	B	C	D	E
9	16.92	24.99	30.81	19.20	15.45
15	25.50	33.32	39.14	27.70	24.45
25	38.96	47.04	53.04	41.10	38.00
37	55.42	63.50	69.32	57.30	53.96

TOLERANCE m/m	APPROVALS	DATE	TITLE
X 0.05	DESIGNED CDU	17/05/06	RR SERIES D-SUB CONNECTOR CRIMP VERSION PLUG
X.X 0.1	CHECKED J.F.L	17/05/06	
X.XX 0.3	APPROVED J.F.L	17/05/06	
UNLESS OTHERWISE SPECIFIED		UNIT : MM	SIZE : DRAWING N° L777RR - - P----
			AMPHENOL AMPHENOL SOCAPEX Dole Plant
			Scale N.A. Sheet 1 of 1
			REV A